

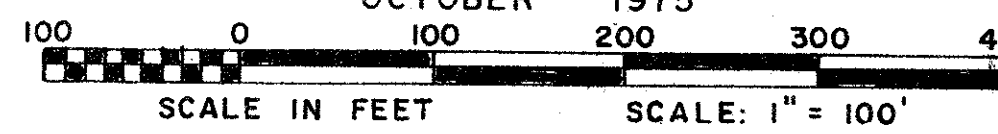
LOS PASEOS OF VIA VERDE

P.U.D.

IN PART OF SECTION 15, TWP. 47 S., RGE. 42 E.

PALM BEACH COUNTY, FLORIDA
IN 2 SHEETS SHEET NO. 2

GEE & JENSON
ENGINEERS-ARCHITECTS-PLANNERS, INC.
WEST PALM BEACH, FLORIDA
OCTOBER 1975

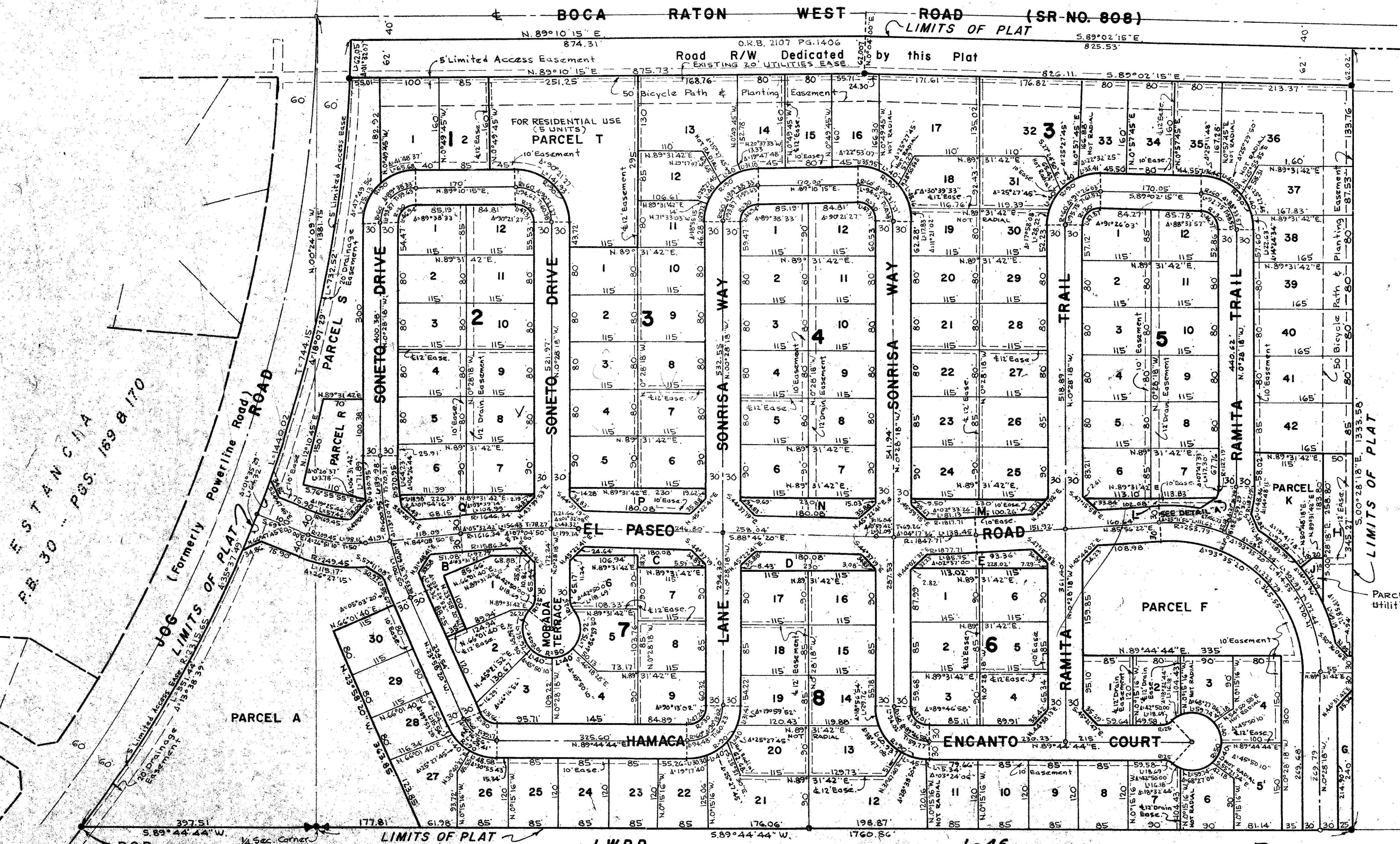
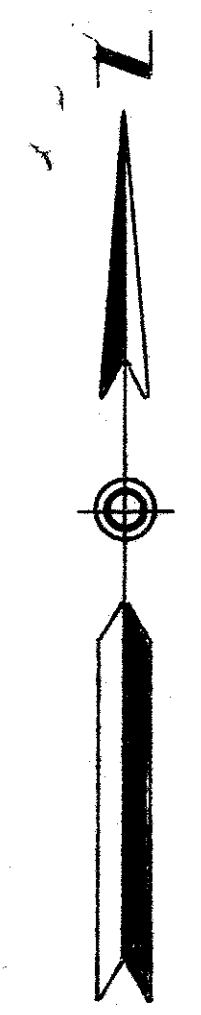


UNPLATTED

NOTE:
THIS PLAT HAS
BEEN REVISED
SEE (PLAT BOOK 32)
PAGE 41
FOR ANY ADDRESSES
Ralph
SEPT 9-1976

199

STATE OF FLORIDA
COUNTY OF PALM BEACH
This Plat was filed for record on _____
this _____ day of _____, 1976,
and duly recorded in Plat Book No. _____
on page _____
JOHN B. DUNKLE, Clerk Circuit Court
By _____, D.C.



NOTES

- Building Setback Lines shall be as required by Palm Beach County Zoning Regulations.
- There shall be no buildings or other structures placed on Utility Easements.
- There shall be no buildings or any kind of construction or trees or shrubs placed on Drainage Easements.
- Easements are for Public Utilities, unless otherwise noted.
- o denotes Permanent Control Point.
- denotes Permanent Reference Monument
- All bearings shown hereon are relative to an assumed meridian used throughout Boca West.
- Where Utility Easements and Drainage Easements cross, Drainage Easements shall take precedent.
- All areas designated by letters are Parcels.
- Parcels A thru F, inclusive, to include Bicycle Path.

UNPLATTED

PARCEL J is for Public Utilities (Lift Station)

DETAIL "A"
N.T.S.

0323-319

SE Corner of
Sec. 15-47-42

31/198

LOS PASEOS OF VIA VERDE

UNPLATTED

SW Corner of
Sec. 15-47-42
2285.93
N 89° 44' 44" E
POB (SEE ABOVE)
DETAIL - SECTION 15